



Department for Education

2014 ADOPTION SCORECARD

Local Authority Scorecard

December 2014

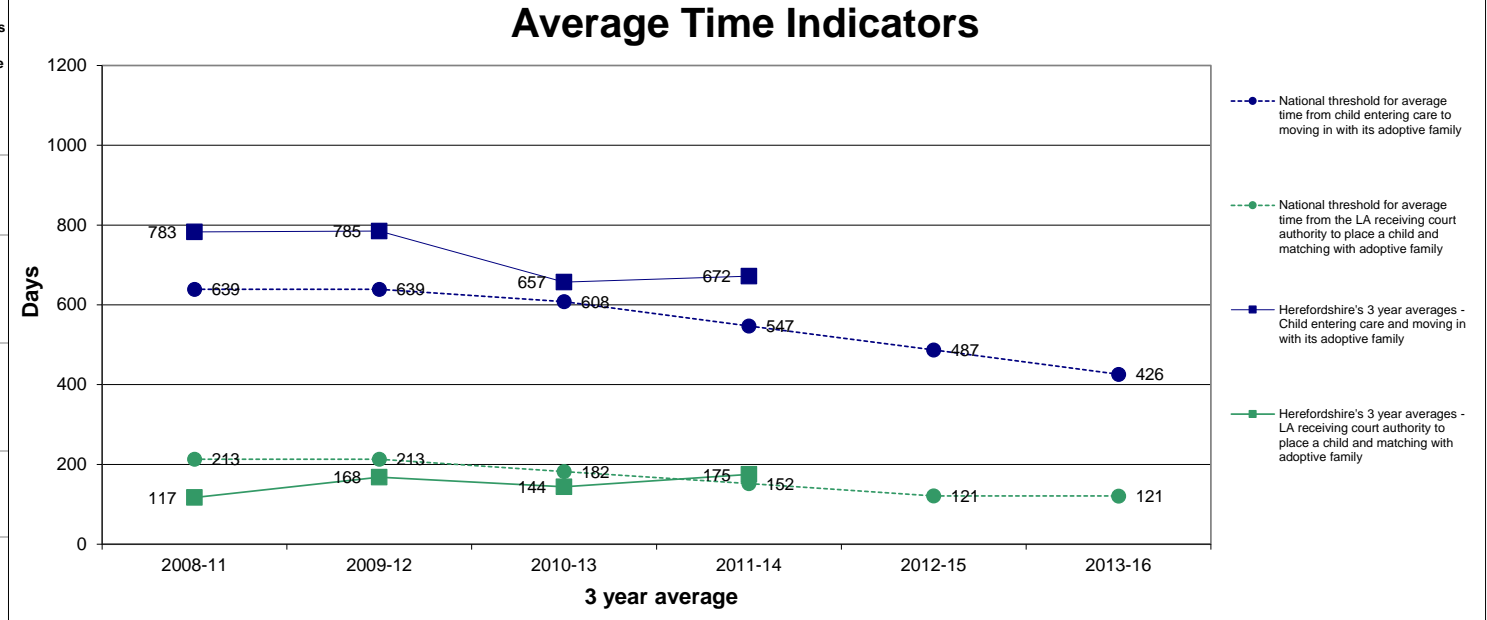
Children's Services and Departmental Strategy Directorate

Adoption Scorecard

Choose Local Authority

Children

	Average time between a child entering care and moving in with its adoptive family, for children who have been adopted (days)	Average time between a local authority receiving court authority to place a child and the local authority deciding on a match to an adoptive family (days)	Children who wait less than 18 months between entering care and moving in with their adoptive family (number and %)
LA's 3 year average (2011-14)	428	127	45 (67%)
1 year trend - Improvement from 2013 to 2014	Average time in 2014 was shorter than in 2013	Average time in 2014 was longer than in 2013	n/a
3 year trend - Improvement from 2010-13 to 2011-14	Average time in 2011-14 was shorter than in 2010-13	Average time in 2011-14 was longer than in 2010-13	n/a
England 3 year average (2011-14)	628	217	11,360 (51%)
Distance from 2011-14 performance threshold	Threshold met	Threshold met	n/a



Adopters

	Number of approved adoptive families as at 31 March 2014	Proportion of adoptive families who were matched to a child during 2013-14 who waited more than 3 months from approval to being matched to a child
LA average	20	57
England	5,795	58

Related Information

	Adoptions from care (number adopted and % leaving care who are adopted)	Number and % of children for whom the permanence decision has changed away from adoption	Average time between a child entering care and moving in with its adoptive family. Where times for children who are adopted by their foster family are stopped at the date the child moved in with the foster family (days)	Adoptions of children from ethnic minority backgrounds (number adopted and % of BME children leaving care who are adopted)	Adoptions of children aged five or over (number adopted and % of children aged 5 or over leaving care who are adopted)	Average length of care proceedings locally (weeks)	Number of children awaiting adoption (as at 31 March 2014)	Number of children awaiting adoption with a placement order (as at 31 March 2014)	Number of applications for approval as an adopter still being assessed (not yet approved or rejected) as at 31 March 2014
LA's 3 year (2011-14)	40 (13%)	10 (13%)	344	x (x%)	x (x%)	39	15	15	10
England 3 year (2011-14)	12,530 (14%)	3,230 (12%)	525	1,910 (8%)	2,790 (5%)	48	6,370	4,680	4,245

Adoption Scorecard

Statistical Neighbour Comparisons																
		Children			Adopters		Related Information									
		Average time between a child entering care and moving in with its adoptive family, for children who have been adopted (days)	Average time between a local authority receiving court authority to place a child and the local authority deciding on a match to an adoptive family (days)	Children who wait less than 18 months between entering care and moving in with their adoptive family (%)	Number of approved adoptive families as at 31 March 2014	Proportion of adoptive families who were matched to a child during 2013-14 who waited more than 3 months from approval to being matched to a child (%)	Adoptions from care (% leaving care who are adopted)	% of children for whom the permanence decision has changed away from adoption	Average time between a child entering care and moving in with its foster family, for children who have been adopted by their foster parents (days)	Adoptions of children from ethnic minority backgrounds (% of BME children leaving care who are adopted)	Adoptions of children aged five or over (% of children aged 5 or over leaving care who are adopted)	Average length of care proceedings locally (weeks)	Number of children awaiting adoption (as at 31 March 2014)	Number of children awaiting adoption with a placement order (as at 31 March 2014)	Number of applications for approval as an adopter still being assessed (not yet approved or rejected) as at 31 March 2014	
884	Herefordshire	428	127	67	20	57	13	13	344	x	x	39	15	15	10	
893	Shropshire	400	62	76	40	46	16	0	398	x	3	35	15	5	35	
933	Somerset	560	156	51	35	59	13	6	454	x	4	51	65	30	60	
878	Devon	545	153	60	75	70	8	14	485	x	2	43	70	45	45	
908	Cornwall	449	144	77	35	51	16	7	428	21	6	32	40	40	40	
835	Dorset	497	132	69	30	50	12	15	343	x	3	37	20	15	25	
935	Suffolk	515	216	64	65	60	26	3	466	20	9	36	60	55	35	
865	Wiltshire	637	165	40	45	61	13	4	580	15	4	50	40	15	30	
926	Norfolk	557	206	65	65	28	16	9	471	13	4	38	90	60	50	
916	Gloucestershire	593	113	47	45	54	13	10	481	12	5	53	50	35	80	
845	East Sussex	536	199	54	40	37	20	8	473	12	6	46	85	65	35	
	Statistical Neighbours	529	155	60	48	52	15	8	458	16	5	42	54	37	44	
970	England	628	217	51	5,795	58	14	12	525	8	5	48	6,370	4,680	4,245	